

Welcome

Patricia Hickman, Interim Director
Division of Land Restoration
West Virginia Department of Environmental Protection



Earl Core Road (Sabraton)



Earl Core Road (Sabraton)



Before

Sterling Faucet
Plumbing Manufacturing Facility

Earl Core Road (Sabraton)



Earl Core Road (Sabraton)



Earl Core Road (Sabraton)



Earl Core Road (Sabraton)



Earl Core Road (Sabraton)



Earl Core Road (Sabraton)



Earl Core Road (Sabraton)



Earl Core Road (Sabraton)



Earl Core Road (Sabraton)



Earl Core Road (Sabraton)



Earl Core Road (Sabraton)



Earl Core Road (Sabraton)



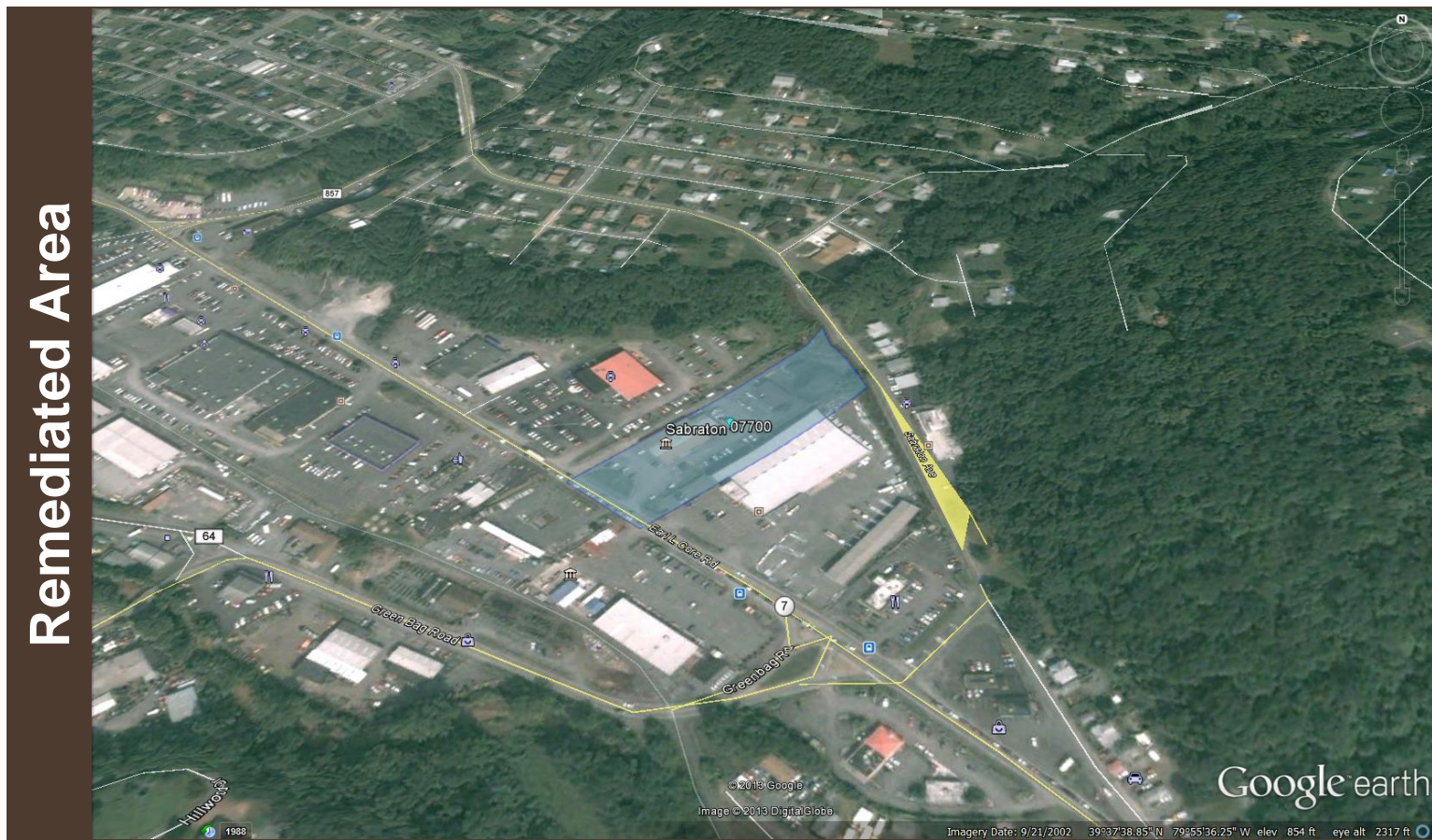
Earl Core Road (Sabraton)



Earl Core Road (Sabraton)



Sabraton Professional Building



Sabraton Professional Building



Before

West Virginia Department of Highways
Monongalia County Headquarters

Sabraton Professional Building



Sabraton Professional Building



**USDA/GSA Sabraton
Professional Building**

Sabraton Professional Building

Before



After



Mon River Trail North (Star City)

Remediated Area



Mon River Trail North (Star City)



Before

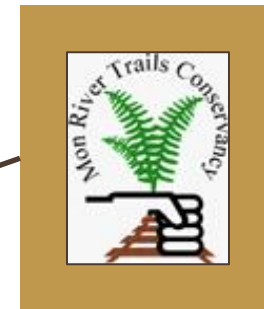
Quality Glass
Glass Plant

Mon River Trail North (Star City)



After

Mon River Trail North (Star City)



Mon River Trail North

Plans to add:
Parking
Restrooms
ADA-complaint pathway to trail

Mon River Trail North (Star City)

Before



After



Welcome

Patricia Hickman, Interim Director
Division of Land Restoration
West Virginia Department of Environmental Protection

