

EXECUTIVE SUMMARY

ABANDONED RAIL CORRIDOR ASSESSMENT

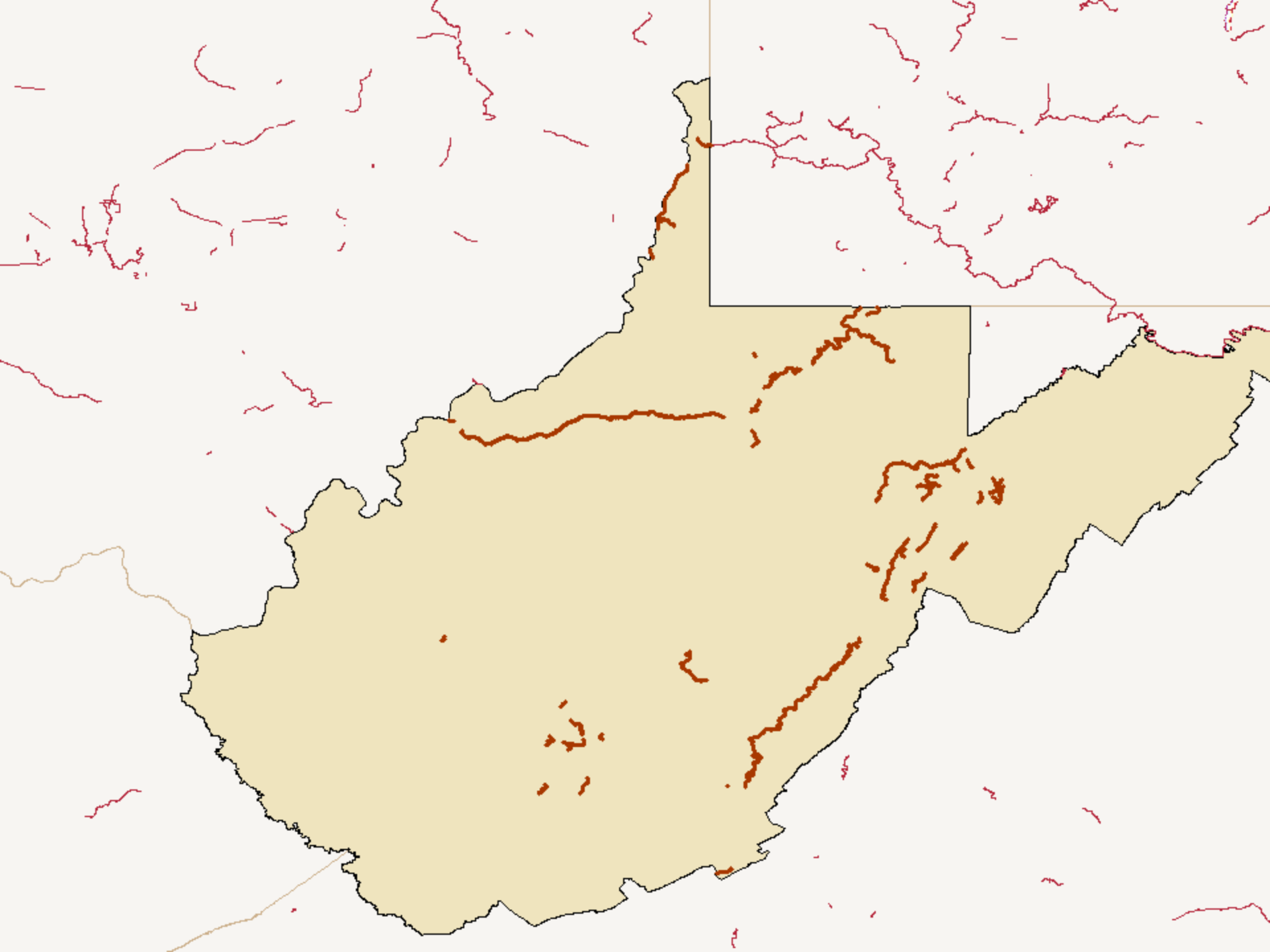


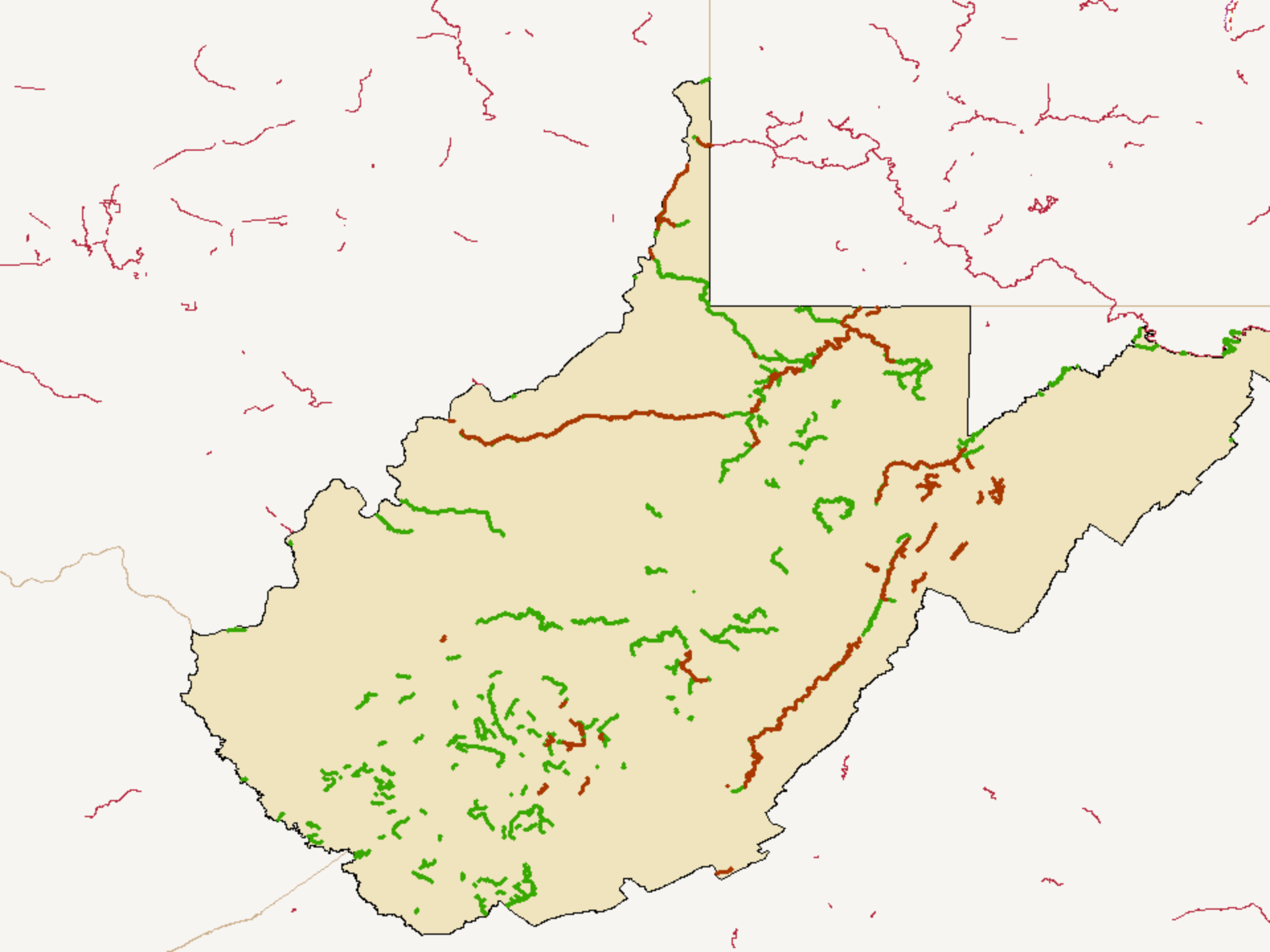
PREPARED BY
RAILS-TO-TRAILS
CONSERVANCY
FOR THE STATE OF
WEST VIRGINIA

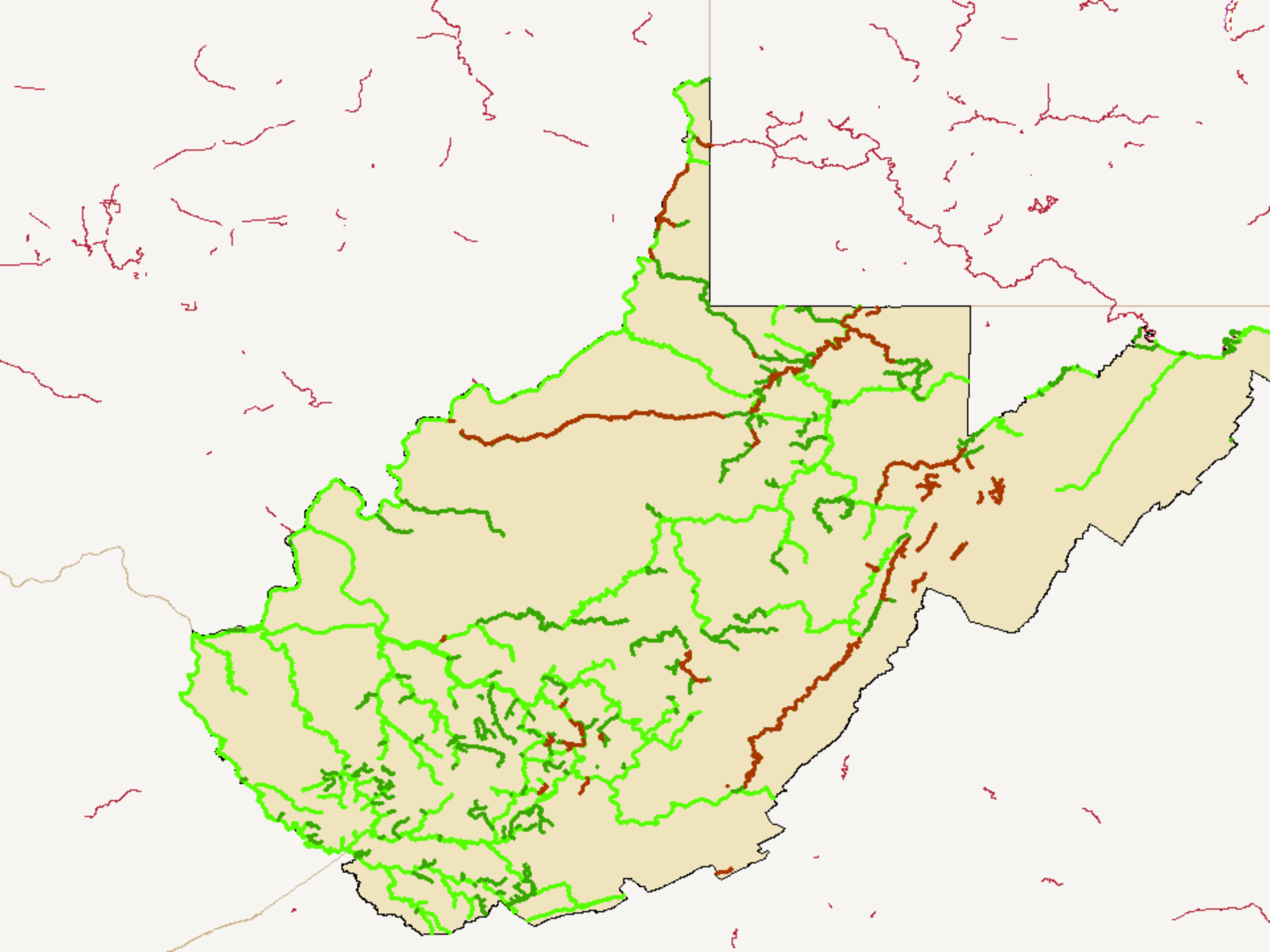
WV Rail-Trail Stats

A group of cyclists is riding on a paved rail-trail through a forest. The trail is wide and paved, curving slightly to the right. In the foreground, three cyclists are riding towards the camera. The cyclist on the left is wearing a blue jacket and a blue helmet. The cyclist in the middle is wearing a dark jacket and a white helmet. The cyclist on the right is wearing a bright green jacket, an orange safety vest, and a black helmet. In the background, several other cyclists are visible, some further down the trail. The forest is lush with green foliage, and the trees are tall and thin. The overall scene is bright and sunny.

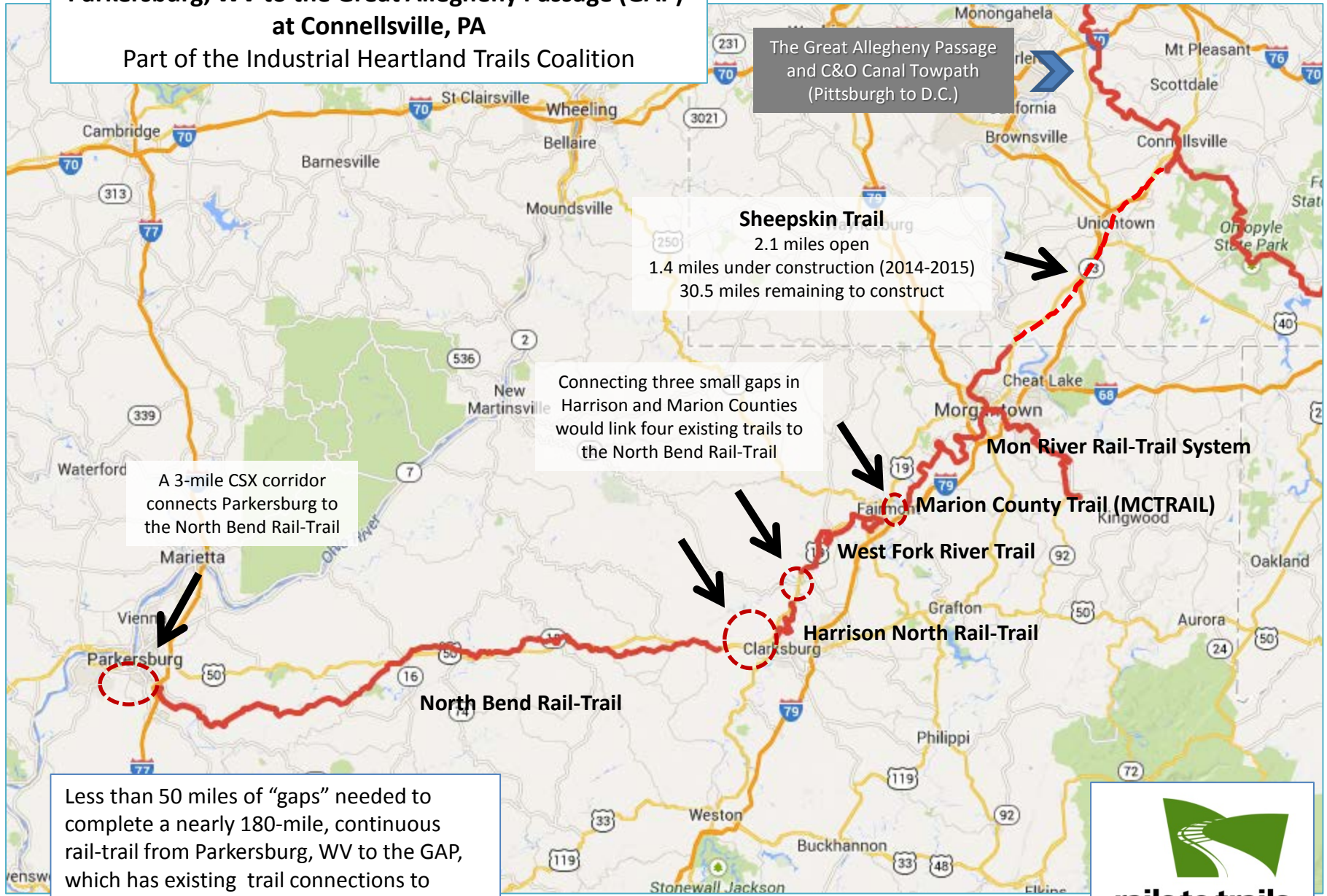
- 63 total rail-trails
- 554 miles of rail-trails
- 11 current projects
- 80 miles of potential rail-trail







An Emerging Trail System: Parkersburg, WV to the Great Allegheny Passage (GAP) at Connellsville, PA Part of the Industrial Heartland Trails Coalition



Less than 50 miles of “gaps” needed to complete a nearly 180-mile, continuous rail-trail from Parkersburg, WV to the GAP, which has existing trail connections to Pittsburgh, PA and Washington, DC.



CONNECTIONS
CONNECT
180 MILES
of Rail Trail

AND I'LL
COME FROM
Ypsilanti, MI